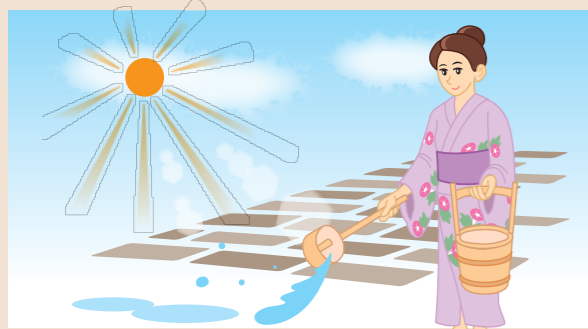


# 伝統的な町並みが残る東山界隈で、金沢らしさや住民が守りたいことを紹介します。

In the Higashiyama neighborhood, a traditional townscape remains to this day. Here we will introduce the unique qualities of Kanazawa and aspects of the area that residents want to preserve.

～地元や金沢市が協力し合って、自分たちのまちをきれいにし、みんなが気持ちよく生活できるよう工夫しています～  
The local community and Kanazawa City are cooperating with each other to make the town beautiful and to come up with ways for everyone to live comfortable lives.



## 打ち水 Water Sprinkling (Uchimizu)

通りや玄関前に水をまき、土ぼこりを防いだり、夏の間は涼を得て、暑さを和らげたりします。金沢では玄関の中にも打ち水をすることがあります。

Uchimizu means water sprinkling onto roads and the front of entrances. It also protects from dust, cools the town and relieves us from the heat in summer. In Kanazawa, water is also sprinkled inside the entrances of buildings.



## 靴を脱ぐ習慣 Taking Off Shoes in Houses

日本では、家の中では靴を脱ぎます。靴は決められた場所で脱ぎ、脱いだ後は、土足部分を歩かないようにしましょう。靴下を履くことが基本です。

In Japanese houses, residents and visitors take their shoes off. Shoes are taken off in set places. After taking them off, try not to walk in the part meant for outdoor shoes. It is standard to put on socks while spending time in houses.



## ポイ捨て禁止 No Littering

快適で美しいまちづくりのため、ゴミのポイ捨てを禁止しています。植栽の中や、見えにくい場所に捨てられることが多いです。

In order to make the town comfortable and beautiful for everyone, littering is strictly forbidden. There have been many cases of trash being thrown away in plants and other hard-to-see places.



## 界隈の広場やベンチ Plazas and Benches in the Neighborhood

お店で買った食べ物、飲み物を屋外で食べる時は、広場やベンチがおすすめ。お店に食べる場所やゴミを捨てる場所を聞いてみるのもいいですね。

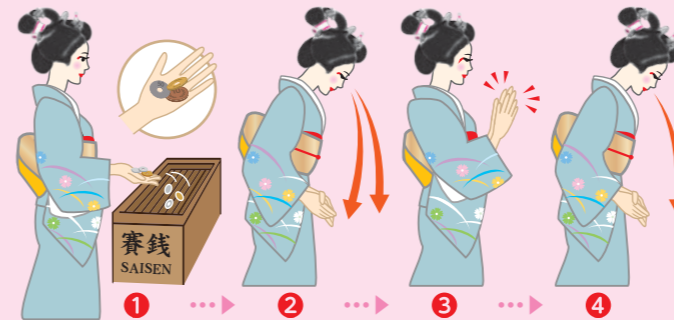
When you eat and drink your purchased food and beverages outside of the stores, we recommend plazas and benches. You can ask stores about where you can eat and throw away trash.



## 消雪装置 Snow Melting Sprinkler

消雪装置といって、パイプを通して道路に地下水を散水し、雪を溶かします。金沢の冬の風物詩です。

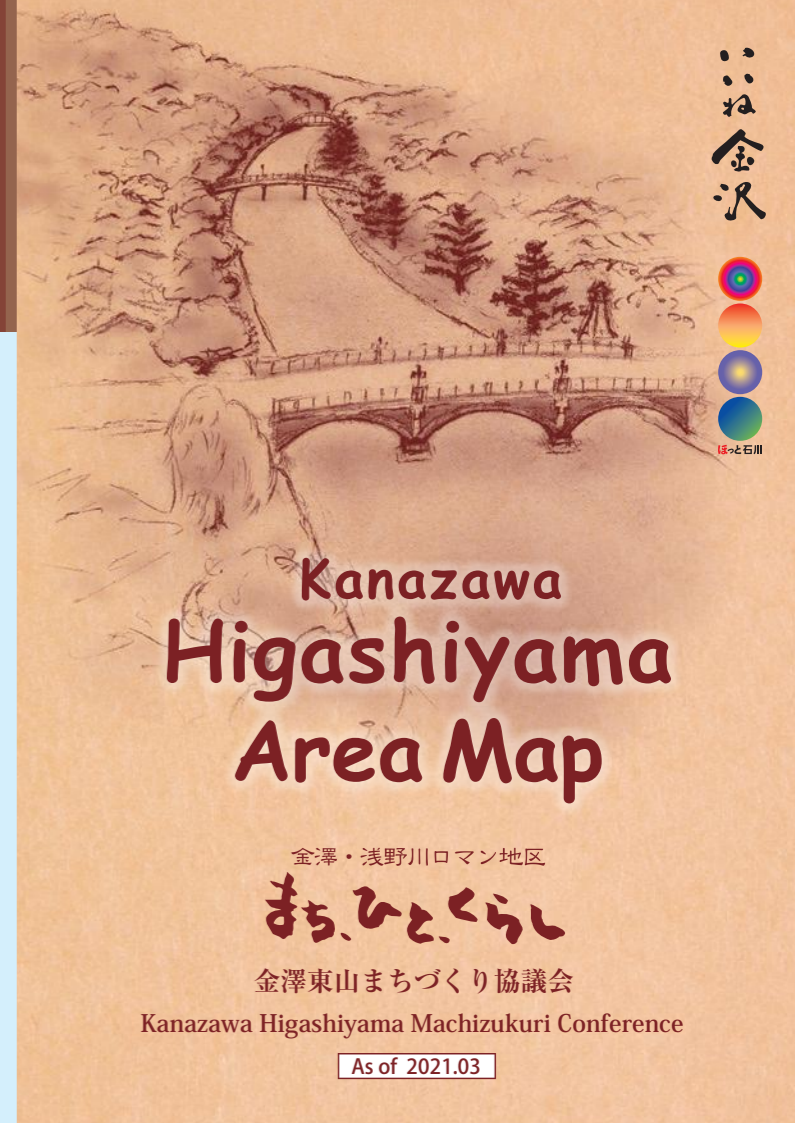
Snow melting sprinklers melt snow by sprinkling underground water on the roads through pipes. These sprinklers bring to mind the winters of Kanazawa.



## 神社参拝作法 How to Worship at a Shrine

① 軽く一礼し、静かに賽銭をいれます。  
② 深く二礼します。  
③ 二拍手した後、両手を合わせて祈願します。  
④ 最後に再び深く一礼します。

1 Bow lightly once and quietly insert money as an offering.  
2 Bow deeply twice.  
3 After clapping twice, put your hands together and pray.  
4 Finally, bow deeply again once.



# Kanazawa Higashiyama Area Map

金沢・浅野川ロマン地区

まち、ひと、くらし

金沢東山まちづくり協議会

Kanazawa Higashiyama Machizukuri Conference

As of 2021.03

## About Higashi Chaya District



Geigi (=Geisha, Around 1940) Higashi chaya district (End of Edo era) ©Kanazawa City

- Higashi Chaya district was established in the Edo period (1820), Kazuemachi Chaya district was founded in Meiji (1869).
- It is a traditional entertainment place where geishas have played traditional Japanese dances and instruments and have entertained people.
- Currently, these two Chaya district are designated as Japanese cultural assets.



Production by Kanazawa Higashiyama Machizukuri Conference.

編集・発行：金沢東山まちづくり協議会

発行日：2021年3月



## 金沢芸妓 Kanazawa Geigi

## お座敷遊び体験 Kanazawa Geisha Experience 金沢芸妓のほんものの芸にふれる旅

Kanazawa Geigi's Traditional Performing Arts and Hospitality

金沢のお茶屋で金沢芸妓の踊りや三味線、太鼓などを鑑賞した後に、お座敷遊びが体験できます。In Kanazawa's chaya, after you appreciate the dances of Kanazawa's geisha, as well as shamisen and taiko and other performances, you can play geisha games with them.

■お問い合わせ (一社)金沢市観光協会 金沢市木ノ新保町1番1号 金沢駅構内 ■Inquiry Kanazawa City Tourism Association 1-1 Kinoshinbo-machi Kanazawa, Ishikawa Japan. tel + 81-76-232-5555



SHOP GUIDE

食事処 / お買い物 / 喫茶 / 酒吧 / 見学・体験

Restaurant Shopping Cafe Bar ACT Activity

- 1 Ameno-Tawaraya (Candy shop) あめの徳屋
- 2 Fukuwauchi (Udon noodle & Kamameshi) 福わ家
- 3 Miyata (Kaga-Fu shop) 宮田
- 4 Bar Teru (Japanese-style Bar) バー輝
- 5 Kanazawa Katani (Gold & Silver leaf shop) カタニ
- 6 Tsukudano-Tsukudani (Tsukudani shop) 佃の佃煮
- 7 Kura (Soba noodle & Donburi) くら
- 8 Gallery Mita (Art gallery shop) ギャラリーミタ
- 9 Asanogawa club (Reading Aloud House) 浅野川倶楽部
- 10 Kinjohro (Japanese cuisine & inn) 金城楼
- 11 Syugetsu (Japanese cuisine) 秋月
- 12 Hongo-jouzou (Miso & Soy sauce shop) 本江醸造
- 13 Nakataya (Kintsuba shop) きんつば中田屋
- 14 Shinbido (Pottery specialty shop) 中村眞美堂
- 15 Takahashi (Flower shop & cafe) 高橋花店
- 16 Sakuda (Gold & Silver leaf shop) さくだ
- 17 Yoshihashi (Pre-order sales only) (Traditional confectionery) 吉はし
- 18 Kadocho (Udon & Soba noodle) 愛宕 加登長
- 19 Kanazawa Link (Beer restaurant) 金澤 LINK
- 20 Momogumi (Fresh juice cafe) 桃組
- 21 Tamatomi (Japanese style bar) 玉とみ
- 22 Shibafune-koide (Japanese confectionery) 柴舟小出
- 23 Yamato Soysauce & Miso (Soysauce & Miso Dish) ヤマト醤油味噌
- 24 Higashiyama-Mizuho (Japanese restaurant) 東山みずほ
- 25 Yamanoo (Japanese cuisine & inn) 山乃尾
- 26 Shima (National important cultural asset) 志摩
- 27 Yamaya (Antique shop) 山屋
- 28 Hakuza-Hikarigura (Gold & Silver leaf shop) 箔産ひかり蔵
- 29 Jyugatsuya (Japanese restaurant) 十月亭
- 30 Issho (Japanese tea cafe) 一笑
- 31 Higashiyama-Syuraku (Sake shop) ひがしやま酒楽

- 32 Fumuroya (Kaga-Fu shop) 不室屋 東山店
- 33 Teriha (Japanese-style Wine bar) 照葉
- 34 Kyoka (Face towel, chopsticks) 今日香
- 35 Soshin (Japanese-style Cafe) 素心
- 36 Kureha (Kaga-Yuzen goods shop & Cafe) 久連波
- 37 Kaikaro (Traditional Teahouse) 懐華楼
- 38 Tamakushige (Accessories & Crafts) 玉匣
- 39 Tsurukame (Japanese-style goods) 鶴亀
- 40 Chayu (Gelato cafe) 茶ゆ
- 41 Ushioya (Seafood bowl shop) うしおや東山店
- 42 Ryomon (Bistro Restaurant) リョーモン
- 43 Aioi (Traditional crafts shop) あいおい
- 44 Gauche (Cafe & Bar) ゴーシュ
- 45 Kurumiya (Japanese-style goods) くるみや
- 46 Syami (Cafe & Gallery) 三味
- 47 Buemon (Soba noodle restaurant) 武右衛門
- 48 Hakuichi (Gold & Silver leaf shop) 箔一 東山店
- 49 Kyodenya (Japanese rice shop) 経田屋
- 50 Jiyuken (Restaurant) 自由軒
- 51 Yoshihisa (Accessories & Crafts) 吉久
- 52 Senjyu (Souvenir shop) 千寿
- 53 Miyashita (Tempura Restaurant) 宮下
- 54 Takamiya (Hyakuman-yaki shop) 多華味屋
- 55 Todorokitei (Bistro) とどろき亭
- 56 Wataya (Pharmacy store) 綿谷小作薬局
- 57 Yonezawa (Japanese tea shop) 米沢茶店
- 58 Takashima (Sushi restaurant) 鮎たかしま
- 59 Curiente kawabata (French restaurant) くりえんテ
- 60 Machiyajuku (Cafe) 町屋塾
- 61 Shogyotei (Japanese cuisine) 松魚亭

# Kanazawa Higashiyama Area Map

2021.03

Descriptions of store names, places and other items may change depending on the circumstances. Thank you for your understanding.  
※店名や場所等の記載が都合により変更となる場合があります。予めご了承ください。

**KANAZAWA LOOP BUS (Left Loop)**

- Kanazawa Station East Side Exit No.7 Bus Stop.
- Hours of operation/Start 8:30~Last 18:00 (It operates at intervals of 15minutes.)
- One Fare ¥200 (Child ¥100)

**KANAZAWA LOOP BUS (Right Loop)**

- Kanazawa Station East Side Exit No.7 Bus Stop.
- Hours of operation/Start 8:38~Last 18:05 (It operates at intervals of 15minutes.)
- One Fare ¥200 (Child ¥100)

**Plazas and Benches in the Neighborhood**

このマークが界隈の主な広場やベンチの目印です。  
This mark represents the main plazas and benches in the neighborhood.

**No Smoking No Littering**

Smoking on the streets and littering in the neighborhood are both strictly forbidden.  
※界隈での路上喫煙、ゴミのポイ捨て禁止。