

SWITORUKE?
(Do you know?)

KANAZAWA SHIGUSA



"Kanazawa shigusa" stands for the mindful and warmhearted manners and gestures of the people of Kanazawa. Here are a few examples of this treasured culture that has been handed down for generations.

When welcoming guests in summer, we sprinkle water onto the entryway.

We sprinkle water both outside and inside the entryway. This is a purification ritual and also a means to cool down the surrounding heat in the morning and early evening.



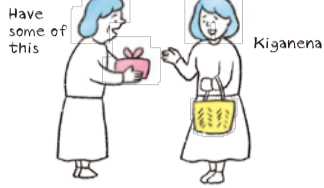
Sweets accompanying tea are placed on two pieces of folded hanshi papers and served on Meimeibon.

Meimeibon is a small tray used to serve sweets for one person. The hanshi paper is for wrapping up leftover sweets and handing them to the customer.



"Anyato," "Kiganena" ... There are many words and phrases in the Kanazawa dialect that express consideration for others.

"Anyato" means "Thank you" "Kiganena" means "Thanks for your kindness" "shimasshi" means "you should ..." "shinashinaato" means "don't rush, take your time"



Kanazawa City Tourism Policy Section City Hall, 1-1-1, Hirotsuka, Kanazawa, Ishikawa 920-8577 Tel.076-220-2194
Kanazawa City Tourism Association 1-1 Kinoshinbo-machi Kanazawa, Ishikawa 920-0858 Tel.076-232-5555

Kanazawa Tourist Information Guide
<https://visitkanazawa.jp/>



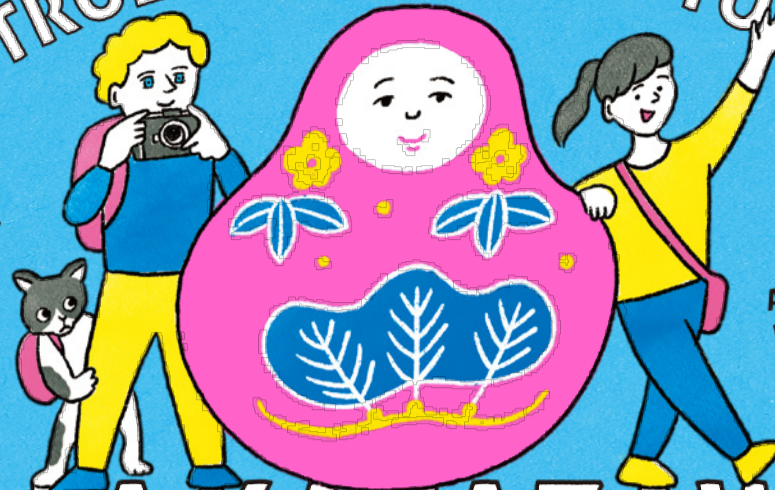
(2021.3)

Free yourself from travel etiquette concerns

STROLLING AROUND TOWN

HAND BOOK

Travel with style!!



A must-read for locals too!

'A LA KANAZAWA'

Travel Concerns: NO.1

I SEE SOMETHING I LIKE!

CAN I PHOTOGRAPH MERCHANDISE AND SHOP INTERIORS WITHOUT PERMISSION?

Oh it's got a peace sign, that's so cute!



Hey, look here, look at me

It was great walking around the market. I loved how the fish and vegetables were so neatly displayed and couldn't help myself from taking lots of photos. But I was a bit scared when a shopkeeper pulled a face.

(Traveler A)

Stylish photography etiquette

Simply ask before you take pictures. Enjoy the communication!

Of course you want to take photos of your travels, but take note when you're in shops. You shouldn't snap photos of goods you haven't paid for, and you shouldn't inconvenience others. Privacy issues need consideration, too. Simply asking the person at the shop before you start shooting is the smart way to do it.



AISORASHII (amiable)



USEFUL TIPS Did you know that Omicho Market is known as "Kanazawa's Kitchen"? It's a place where local chefs, long-time regulars, patrons all do their shopping.

Travel Concerns: NO.2

I WANNA TRY THE LOCAL GRUB ON THE SPOT!

WHERE CAN I EAT THE SNACKS I BOUGHT?

Oi, watch it, buddy



You're kidding me

But where am I supposed to eat this?

As I strolled around the city, I came across a special Kanazawa soft-serve ice cream. I bought it and started eating it, when I noticed the locals giving me a cold look. But my ice cream was melting away. Where should I have eaten it?

(Traveler B)

Stylish outdoor eating etiquette

Eating while walking is not cool. Ask where you can eat.

It's generally considered bad manners in Japan to eat while walking. If you want to eat outdoors, it's best to sit on a bench in a park or a square. If you're looking for an eating spot, ask the shop clerk where you can eat the food you bought.



TABEMASSHI (please eat)



USEFUL TIPS You should avoid eating on local buses too. If you're in a taxi, ask the driver. In some countries and regions, eating while walking is not a problem.

Travel Concerns: NO.3

I SUDDENLY CAN'T MOVE

WHAT SHOULD I DO IF I CAN'T MAKE IT TO THE RESTAURANT I BOOKED?



I suddenly felt sick and rang the restaurant to cancel my reservation, but they only spoke Japanese and I wasn't sure if they understood. How should I have told them?

(Traveler C)

Stylish cancellation etiquette

Make sure you make a cancellation early. Ask others for help.

Unexpected things happen when you're traveling. If you are unable to go to the restaurant you booked, make sure you let them know early. The restaurant is making preparations for you for that particular day and a sudden cancellation would cause trouble. If you find it difficult to notify them, ask a staff member at your accommodation or get in touch with the tourist information center noted below.



JAMANAI (it's all right)



USEFUL TIPS Trouble during your travels? Ask for help and advice at:

•Kanazawa Station Tourist Information Center (8:30-20:00, open 365 days) Tel. 076-232-6200 (English assistance and Wi-Fi available)
•Kanazawa Central Tourist Information Center (10:00-21:00, open 365 days) Tel. 076-254-5020 (English assistance and Wi-Fi available)

Travel Concerns: NO.4

I'VE ENJOYED MY FOOD AND DRINKS,
AND NOW ...

I CAN'T FIND THE GARBAGE BIN! WHAT CAN I DO WITH MY WASTE?



Where I live, garbage bins are
everywhere and I can throw away
trash wherever, whenever.
In Kanazawa, I had trouble finding them.
Can't you place more garbage bins
in the city?

(Traveler D)

USEFUL TIPS

Under the Kanazawa City ordinance for keeping the city clean and comfortable, those spotted littering, leaving pet waste or smoking on the streets could be slapped with a guidance, recommendation or order.

Stylish trash disposal etiquette

Ask to have your waste thrown away at stores or carry a small trash bag handy.

For security reasons, there are only a very few public garbage bins in Japan. We recommend you ask a sales staff at the shop to dispose of the garbage for you or have a small bag ready to hold on to your refuse until you get to your inn, where you can throw it away.



KATAINE
(well done)



Travel Concerns: NO.5

TELL ME ABOUT
JAPAN'S TOILET CULTURE

WHAT CAN WE FLUSH DOWN A TOILET IN JAPAN?



Where I'm from, we usually don't
flush down toilet paper but throw them
into a bin. I heard that in Japan,
we can flush toilet paper down the toilet,
so I did, together with some trash,
and it got clogged.

(Traveler E)

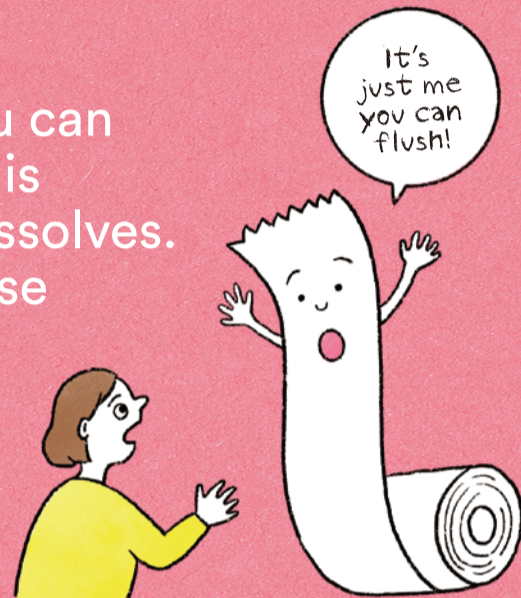
USEFUL TIPS

Many toilets in Japan are Western-style toilets but some are Japanese-style ones. Western-style toilets have seats but people need to squat to use Japanese-style toilets. Many Western-style toilets are equipped with hot-water bidets which aren't so common outside Japan.

Stylish toilet etiquette

The only things you can flush down a toilet is toilet paper that dissolves. Keep everything else out of the toilet.

Toilet papers used in Japan are soluble and can be flushed down the toilet. However, flushing anything else can clog up the toilet or harm the pipes, so please do not flush down anything other than the paper provided.



HOYA HOYA
(that's it)



Travel Concerns: NO.6

WHAT'S THE CORRECT HOUSE ENTRYWAY ETIQUETTE?

HOW DO I TAKE MY SHOES OFF AT A JAPANESE-STYLE HOUSE?



I read in a travel guide that in Japan,
people take off their shoes when entering
a house. So, I removed my shoes
in front of the door but was told that
that was the wrong place to do so.
I am confused, and would like to know
the right way to do it.

(Traveler F)

USEFUL TIPS

As it rains a lot in Japan, people's footwear often become dirty. Japanese people sit directly on Tatami floors so they try to keep the house clean. If you're wearing sandals barefoot, take a pair of socks with you. After taking off your shoes, it is considered polite to turn them facing towards the door and place them neatly to the side of the entryway.

Stylish shoes etiquette

Don't put your feet on the ground after you've taken off your shoes. Also, try to avoid entering someone's house barefoot.

In Japan, people take their shoes off to keep the house clean. Remove your shoes in the designated space, and do not step onto the "outside" ground once you've taken your shoes off. When entering a Japanese-style house, avoid going barefoot and wear socks.



HAIMASSHI
(come on in)



Travel etiquettes and concerns this and that

The shinkansen bullet train reached Kanazawa in 2015. Travelers flocked to everyday cafes, markets and streets, delighting the locals but also causing some unease. Some would say, "There's more littering on the streets," or "I don't feel comfortable having my photo taken without permission." Travelers, on the other hand, would say, "I had a hard time finding a garbage bin," and "I was scolded for taking pictures." If locals and travelers could get to know each other a little better, we'd all feel happier and more at ease - this city and your travels would be more fun.

Let's make the city of Kanazawa and our trip more stylish and more fun.

